

Lot 137 Bowman Street  
Elizabeth Park

**\$ 229,840**

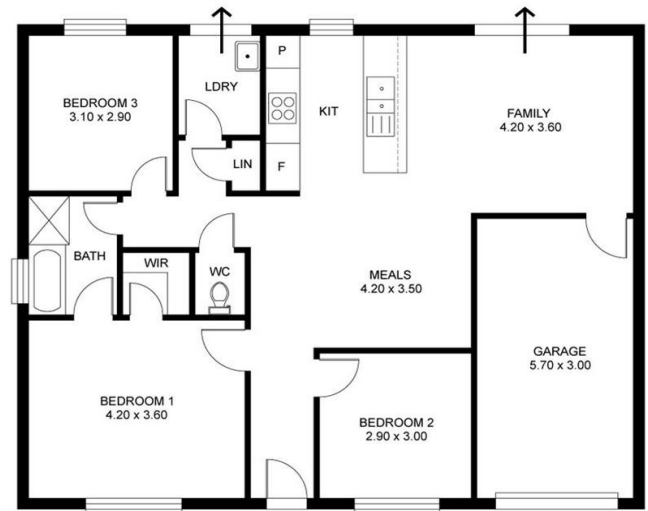
Package includes:

**FIXED PRICE FOOTINGS -  
(NOT JUST AN ALLOWANCE)**



# TANGO

- 3 bedrooms
- Two way bathroom with separate toilet
- Single garage with remote control
- Engineer certified steel frame construction
- Colorbond roof/gutters/fascia
- Insulation to external walls and ceiling
- Walk in robe to main bedroom
- Chrome mixer tapware
- Lever door handles
- China vanity basin and toilet suite
- Overhead kitchen cupboards
- Stainless steel appliances
- Dishwasher provision
- Instantaneous gas hot water service
- Tiled porch with two brick piers
- Floor coverings
- Split system air conditioning
- Stormwater
- Paving
- **Total area 117.86m<sup>2</sup>**



The land referred to in this H & L package is not owned by us and is subject to availability. C.I.P. Homes makes no representations as to the suitability of the land to build on or otherwise. You must satisfy yourself of that by inspection, or by taking professional advice, or otherwise. To the extent permissible by law, all liability, whether in negligence or otherwise, is disclaimed by C.I.P. Homes. All packages are subject to final council approval and energy efficiency assessment. All plans and elevations are for illustration purposes only and certain elevations may not match the particular floor plan. Price is indicative only and subject to change and based on standard costings. Price may vary depending on selections, council and utility requirements. Fees and taxes associated with land purchase are not included in package price. Copyright 2015. Builders Lic 56513 ABN 97 057 352 235

**For more info contact Catherine on 0414 533 386**

**[info@ciphomes.com.au](mailto:info@ciphomes.com.au)**

**[www.ciphomes.com.au](http://www.ciphomes.com.au)**